





# Key Features

Revol is a fast-growing process-based business management software solution provider in cloud environment.

Revol LIMS is a flagship product tailored to manage an organization's laboratory information with data integrity and compliance to regulatory requirements. Revol LIMS offers labs everything from data tracking and analytics to basic enterprise resource planning (ERP).

- ➔ Global access - work from anywhere
- ➔ Data Warehouse (ETL)
- ➔ Configurable workflow
- ➔ SQC / SPC
- ➔ True zero footprint architecture
- ➔ ERP integration
- ➔ PC, Tablet & Mobile responsive pages
- ➔ Complete audit trail
- ➔ Mobile application
- ➔ Electronic signature
- ➔ Real time dashboards
- ➔ Secure, reliable & integrated
- ➔ Dynamic reporting tool
- ➔ Comply with standards

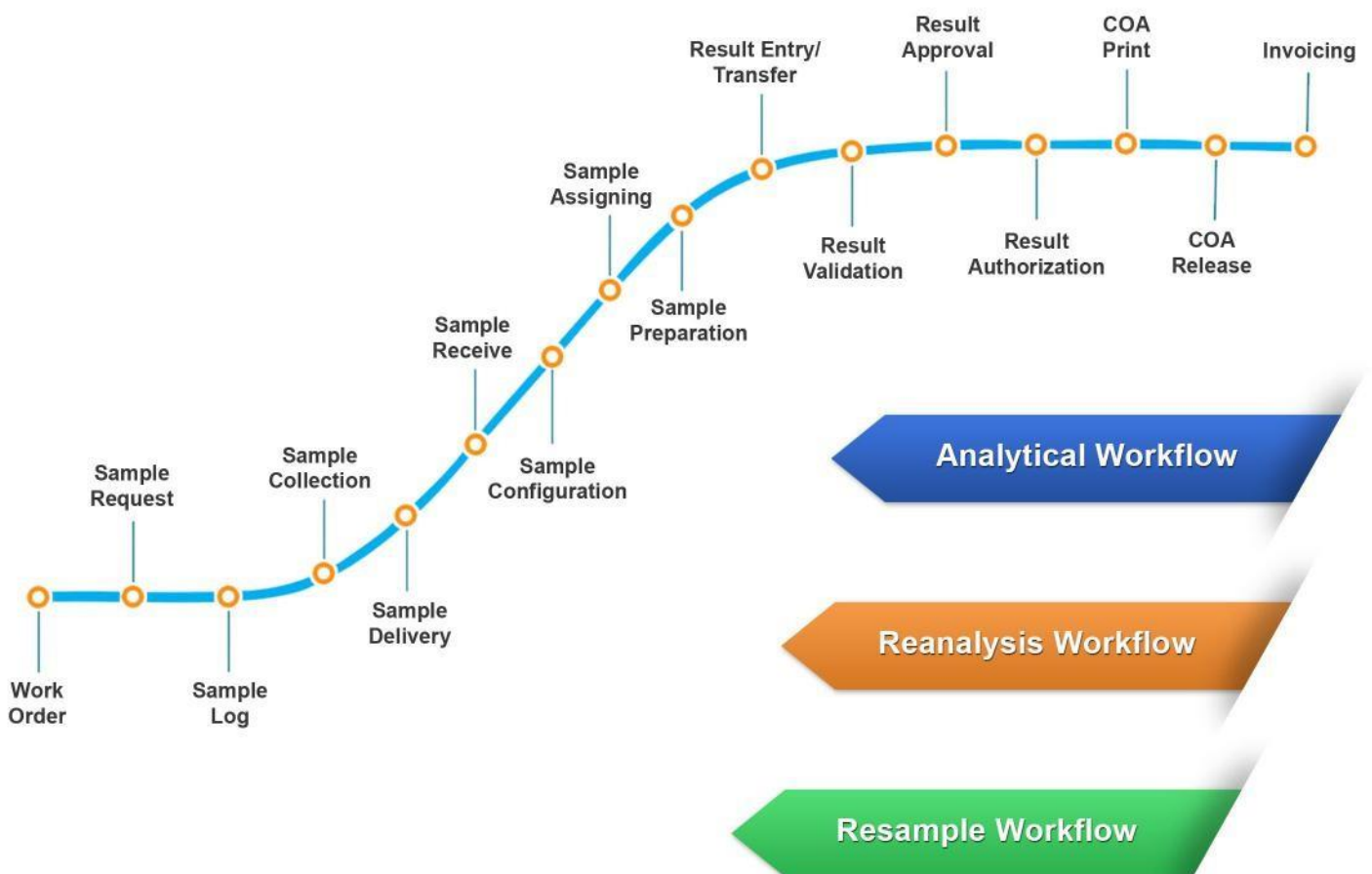


# Configurable Workflow



The configurable workflow in REVOL LIMS allows you to customize the workflow to accommodate your sample life cycle. It can be customized with ease to cater the need of your sample and lab requirements. Adaptive workflow to define new status, create automatic transitions, add new approval and e-signature steps to suit your laboratory requirements.

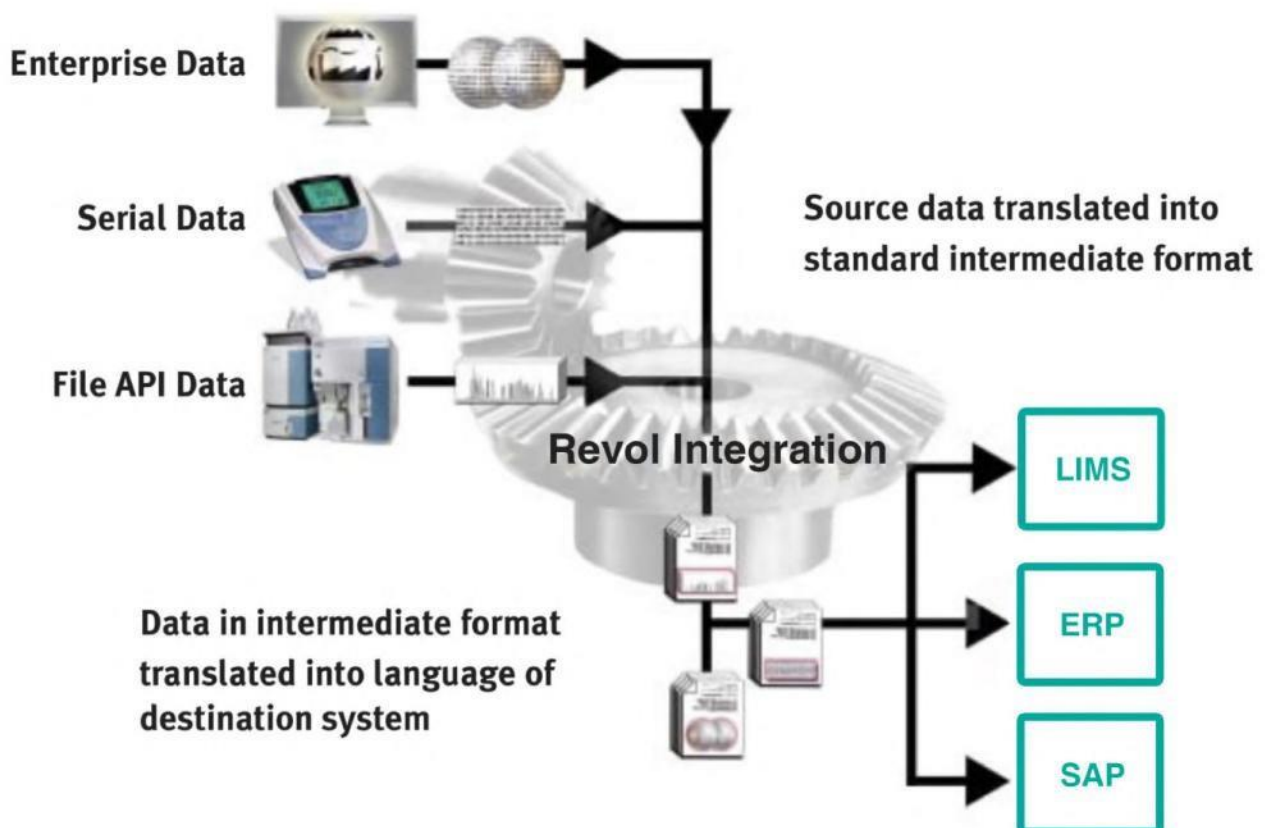
Revol Workflow is preconfigured in advance, to meet the demands of the petroleum, chemical, pharmaceutical, healthcare, life science, forensic, environmental and testing & calibration industries and to ensure a smooth ride in operations by handling time efficiently and increasing the productivity there by reducing the cost of implementation and simultaneously increasing the productivity and hence saving time.



# Instrument Integration

Revol Instrument Integrator connects the LIMS to enterprise and laboratory systems and instrumentation irrespective of the manufacturer or the platform. With the help of a powerful configuration tool, Revol Instrument Integrator retrieves data from different file formats and processes the results. Revol Integrator acts as a translator and easily integrates with LIMS, SAP and ERP Systems.

For complex instruments such as Chromatography Data Systems (CDS) Revol Instrument integrator is activated with bi-directional communication with LIMS to deliver both protocols and requirements and parse results returned as files and simultaneously eliminating data transcription errors.





# Revol LIMS

## Key Modules



### Master Portal

Acts as the master portal in maintaining Manufacturer, Supplier and Customer portals. In addition, it perpetuates the complete details of the Analysis, Specifications, Plant, Product and Sampling Point.



### LIMS Workflow

Guides in effective management of the sample flow with the data associated to it and hence enhancing the lab efficiency. Also contributes in standardizing the workflows, tests and procedures by controlling the process.



### Scheduler

Helps in retrieving sample automatic log for any defined time / day interval and also in timely maintenance and in handling calibrations and preventive maintenance of instruments.



### Instrument Integrator

Integrates instruments in different platforms to coordinate on a whole to display the results automatically in the LIMS. It connects PC based network instruments and other RS232 instruments with easy interfacing.



### Inventory Management

Maintains the entire list of inventories required in the lab such as chemicals, spare parts, consumables and thereby, optimizing the inventory consumption.



### Reagent Management

Helps in the optimization and consumption of the reagents on accounts of the number of analysis performed. It also handles the information about the reagents prepared in the lab with their standardization value and date of expiry and consumption rate.



### Sample Storage

Provides end-to-end sample tracking and complete traceability. The retention samples and counter samples are very well managed based on configurable locations and retention period in this module. System will send automatic reminders and emails for disposal.



### Asset Management

Asset Management is a dedicated application to record and track an asset throughout its life cycle, right from procurement to disposal. It provides an organization with all the needed information about the assets - its location, user/handler, its utility and simultaneously handling its timely maintenance and calibration effectively.



### Gas Management

Monitors the pressure of the gas cylinders, cylinder expiry and the consumption of gases.



### Shift Management

Assists in creating the lab work shift, maintaining the activities performed during the shift and in handing over pending tasks of the subjected shift to next shift.



### Document Management

A system based on computer programs in the case of the management of digital documents. Used to track, manage and store documents and there by avoiding paper work. Also aids in tracking the history of the documents with the modifications made by different users on different versions with the timeline.



### Training Management

Designed to serve as the hub for the entire training operation. It coordinates between all the teams in the business and organizes various training courses effectively with proper scheduling.



### Audit Management

Automates audit-related tasks by simplifying the process and integrating them with a document control system to ensure necessary is properly accessed. In many cases, reliable audit management software is the difference between passing and failing an audit.



### Method Validation

Method validation is the process used to confirm that the analytical procedure employed for a specific test is suitable for its intended use. Results from method validation can be used to judge the quality, reliability and consistency of analytical results; it is an integral part of any good analytical practice.



### CAPA (Corrective Action Preventive Action)

An integral part of a Quality Management System which serves as the central unit to all control points.



### Stability Study

Revol stability study helps in managing the stability study performed in Pharma industries and provide complete statistical reports and trend charts for better decision making.



### MIS Dashboards

Displays a 360 degree view of any information about the sample, instrument and the lab at any desired point. Receive easy-to-understand reports about your lab operations.



### Emails & Reminders

Intimates the staffs by sending alert mails and reminders to keep in check the progress of the process and its completion within the due time.

# Revol LIMS Compliance

Revol LIMS is in compliance with ISO 17025:2017, FDA 21 CFR Part 11, CAP and GLP to meet the requirements of international standards followed around the globe.

## ISO/IEC 17025:2017

ISO/IEC 17025:2017 accreditation specifically assesses factors involved in laboratory's capability to produce precise, accurate test and calibration data including

- 1.Traceability of measurements and calibrations to national standards
- 2.Technical competence of staff
- 3.Maintenance of test equipment
- 4.Quality assurance of test and calibration data
- 5.Validity and appropriateness of test methods
- 6.Appropriate handling and transportation of test items
- 7.Quality of testing environment and sampling

## FDA 21 CFR Part 11

FDA 21 CFR Part 11 compliance dictates that those companies who use electronic systems for document and signature control must provide assurance that the electronic documents are authentic.

FDA 21 CFR Part 11 compliance is essential for those FDA regulated companies that wish to use electronic quality records and electronic signatures in place of their paper-based and ink-based counter parts to comply with FDA regulations faster and more efficiently.

## GLP

GLP (Good laboratory practices), mandated by the Food and Drug Administration (FDA) refers to a system of management that ensures laboratories and research organizations in maintaining consistent and reliable results. The ultimate purpose of GLP compliance is to assure quality, traceability, integrity, and validity of test results.



# Key Benefits

Laboratories implemented with Revol LIMS are cushioned with many benefits.



### EFFICIENCY

- Eliminate lost data
- Retrieve data quickly
- Access archived data
- Generate invoices
- Generate & send reports



### PRODUCTIVITY

- Track productivity
- Increase throughput
- Document lab output
- Spend time effectively
- Provide access to data by clients



### ACCURACY

- Reduce error
- Enhance quality control
- Verify data at input
- Avoid missed deadlines
- Avoid the embarrassment of false results
- Easy regulatory compliance



### CUSTOMER SATISFACTION

- Electronically notify customers
- Online result and COA availability for clients
- Configure reports to meet customer needs



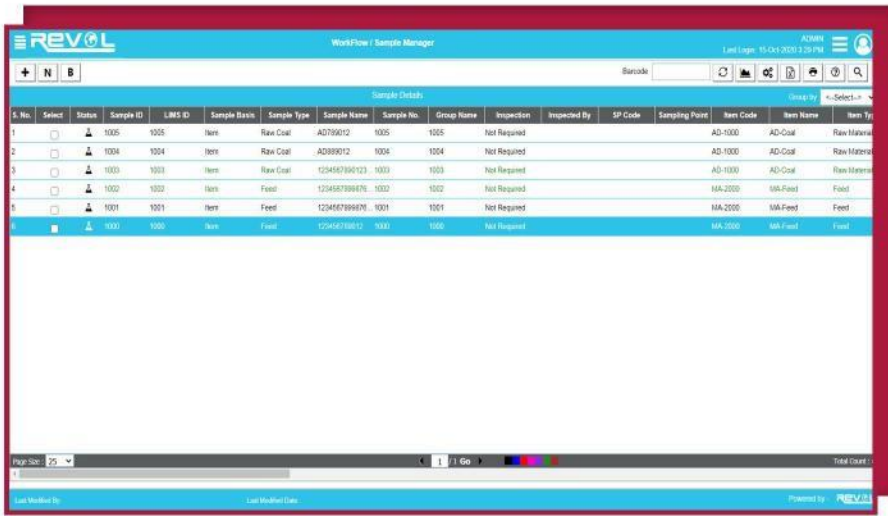
### SECURITY

- Better data privacy & protection
- Easy data backup & data mining options



# Revol LIMS at a glance

## Sample Manager

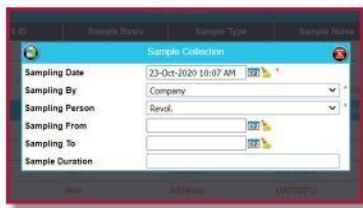
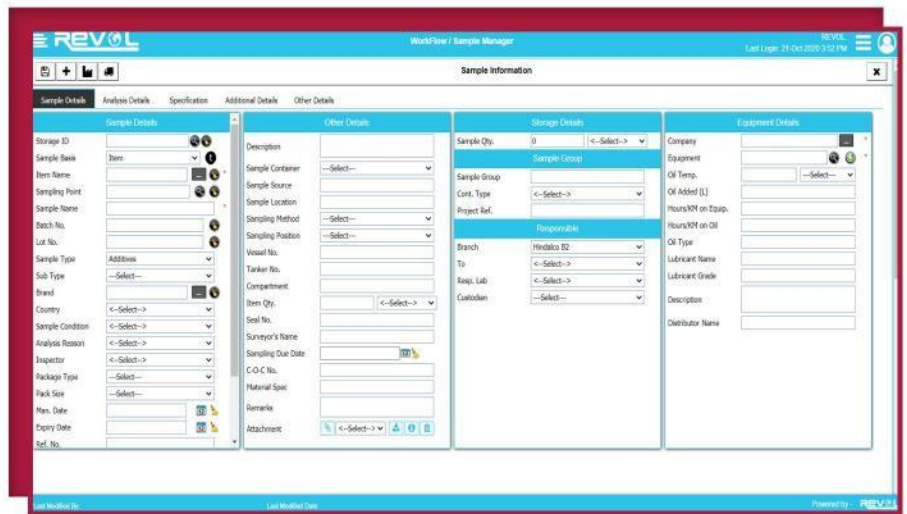


## Sample Manager

Revol LIMS GUI is very intuitive and user friendly. Revol Sample Manger screen provides the user to manage the complete workflow from single screen.

## Sample Details

Revol Sample Details screen pre-configured with most possible controls to meet industry specific requirements. The controls can be configured by the user.



Sample Collection



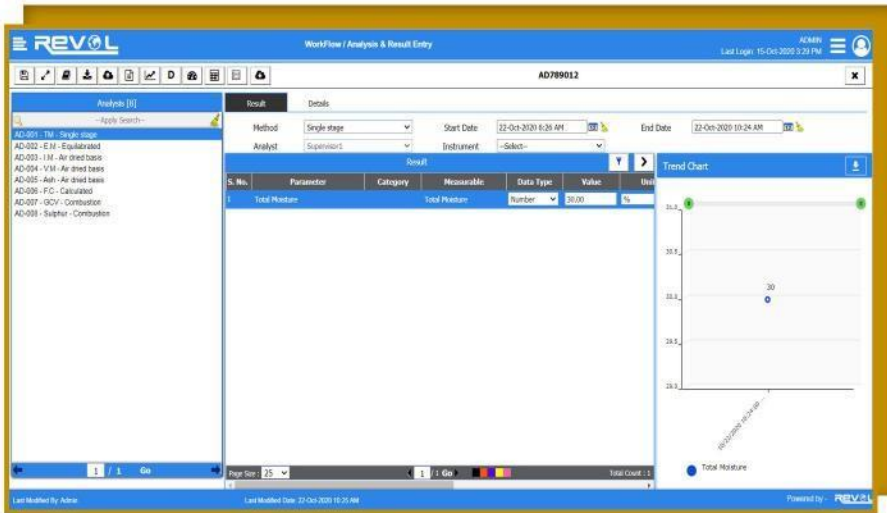
Sample Delivery



Sample Receive

# Revol LIMS at a glance

## Result Entry

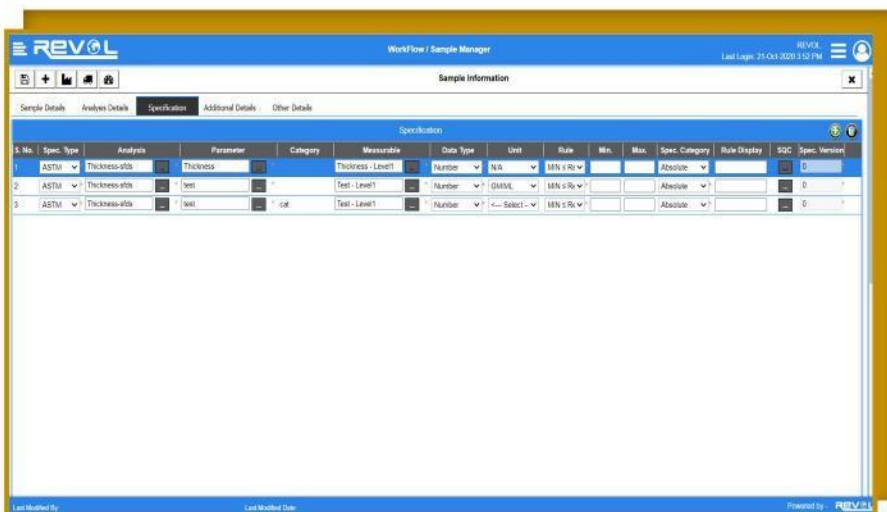
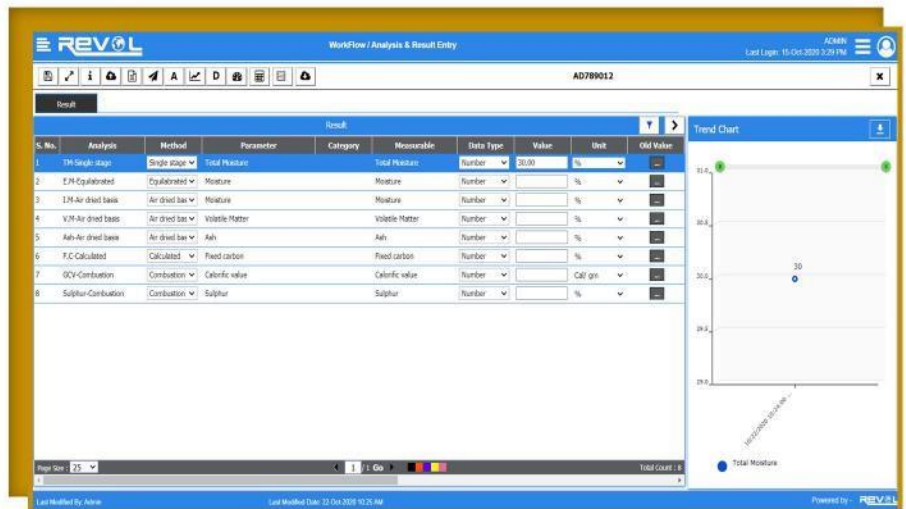


## Result Entry

Revol Result Entry screen provides user to manage to enter the results sample wise or analysis wise. It allows to update partial results also.

## Result Entry

Revol Result Entry screen provides the opportunity to track the previous results for every parameter before result entry. It also gives an alert for the results out of specification.



## Result Entry

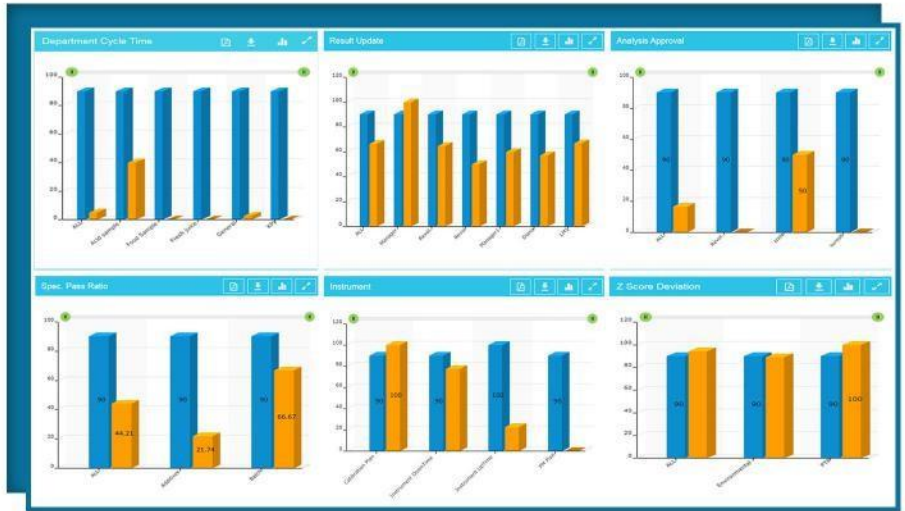
Result Entry screen allows the user to enter result, change methods, change units and select the instrument and Analyst. User can attach result files and other related documents along with results.

# Revol LIMS at a glance

## Dashboards

### Laboratory KPI

Revol KPI provides the option to configure the KPI parameters for the specific industry to provide 360° view of laboratory performance.



### Sample Tracking

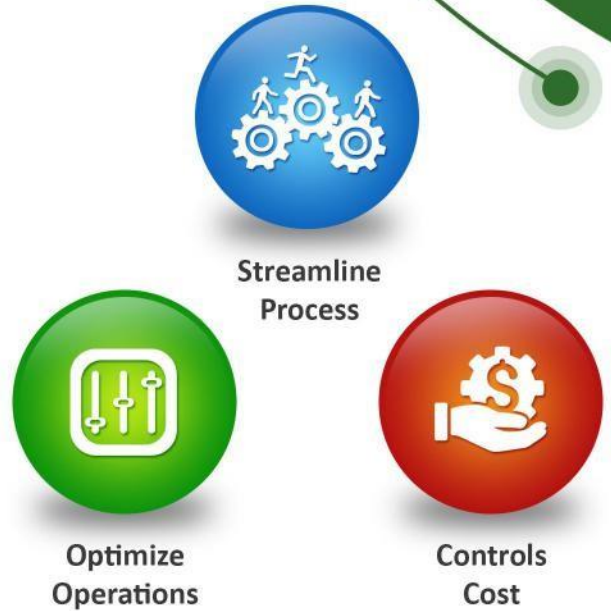
Revol Sample Tracking dashboard provides 360° view of the samples enables the stakeholders to make their decision easy.

### Sample Workload

Revol sample workload provides 360° view of the sample workloads distributed to Analyst, Instruments, Sampling Points, etc.



# What Makes Revol LIMS Different?



**“Focus on Innovation, Focus on Core Business”**